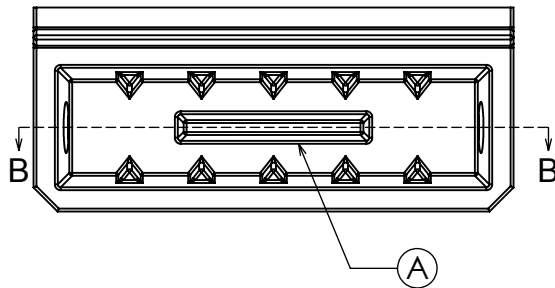


1-1/2" NPT  
RAISED BLACK SPINWELD  
#56DTB  
2X



REV.	DESCRIPTION	DATE
A	add rib	9/29/2011

PROPRIETARY AND CONFIDENTIAL  
THE INFORMATION CONTAINED IN THIS  
DRAWING IS THE SOLE PROPERTY OF  
SELJAN CO.. ANY REPRODUCTION  
IN PART OR AS A WHOLE WITHOUT THE  
WRITTEN PERMISSION OF SELJAN CO. IS  
PROHIBITED.

MATERIAL  
LLDPE  
DRAWN: JJS  
MAY-24-2011

DO NOT SCALE DRAWING.  
DIMENSIONS ARE IN INCHES.  
TOLERANCES UNLESS SPECIFIED:  
FRAC:  $\pm 0.010"$  PER LINEAR 1"  
ANGULAR: MACH  $\pm 1$  BEND  $\pm 2$   
ONE PLACE DECIMAL  $\pm 0.13$   
TWO PLACE DECIMAL  $\pm 0.06$   
THREE PLACE DECIMAL  $\pm 0.01$   
ALL CORNER RADIUS =  $1/4 \pm 0.13$   
FLATNESS =  $\pm 0.020"$  PER 1"  
LINEAR TOL. =  $\pm 0.010"$  PER 1"

BLUE THUMB		
20" CASCADE		
SIZE A	PART NO. B-9890	REV. A
SCALE: 1:8	ENGINEERING APPROVAL: JULY-22-2011	SHEET 1 OF 1